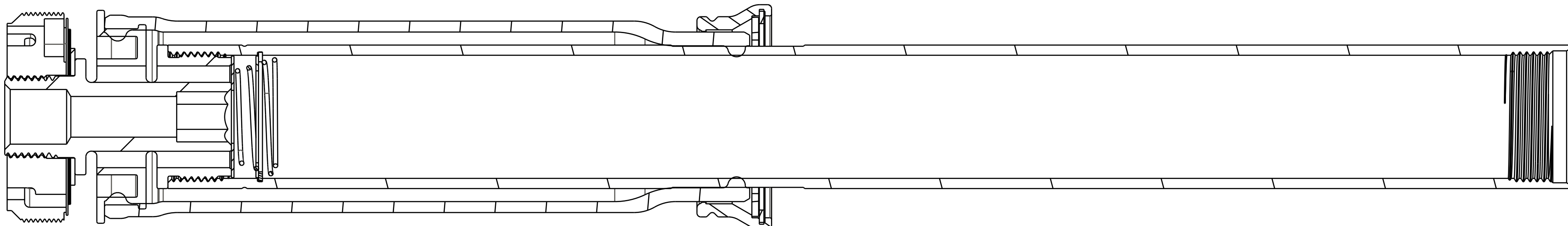


4

3

2

1



038-00-065 Retaining Ring: Snap, Smalley, Internal, Custom, Ø.923 BORE

241-01-029 Bladder retainer, 011 RC2

210-22-609 LOWER BLADDER RING, SNAP RING, 013 32-34 CTD F/P AND iRD CD

210-22-303 Bladder, 010 RL\_RLC

IMPORTANT: ENSURE RETAINING RING IS FULLY SEATED INTO GROOVE FULL 360°

045-00-130 VALVE, 14.12MM OD X 6.15MM ID X 0.3MM TH

039-00-205 Spring, Comp. Check, 2013 FIT-CTD, FIT-CTD Adjust and iCD

IMPORTANT: ENSURE RETAINING RING IS FULLY SEATED INTO GROOVE FULL 360°

GREASE: THIN LAYER OF SLICK HONEY ON INNER/OUTER SURFACES

COMPRESSION VALVE STACK  
820-03-341-KIT

TORQUE:  
75±5 IN.LB.

CARTRIDGE BODY

038-00-061 Retaining Ring: Internal, Smalley VH-56, 302 Stainless Steel

045-00-131 VALVE, METRIC [14.12MM OD X 10.67MM ID X 0.30MM TH]

**FOX** FOX Factory, Inc. Ph 831-768-1100  
130 Hangar Way, Watsonville, CA 95076 USA Fax 831-768-9312

TITLE  
**2015 34 FIT CTD  
Bladder and Cart Body**

SIZE DWG. NO.  
**C**

PLOT SCALE | .00:1

SHEET 1 OF 1

- PROPRIETARY -  
THIS DOCUMENT CONTAINS CONFIDENTIAL, PROPRIETARY INFORMATION  
THAT IS FOX PROPERTY. DO NOT DISCLOSE TO OR DUPLICATE  
FOR OTHERS EXCEPT AS AUTHORIZED BY FOX.

4

3

2

1

ProE ASSEM